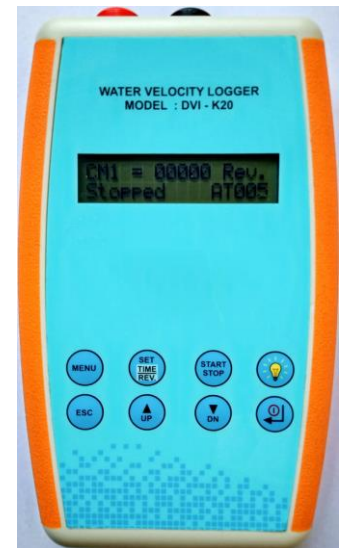


Water Velocity Logger

Model: DVI-K20

The Virtual Make "Water Velocity Logger" Model: *DVI-K20* is a small electronic hand-held device that can be used to measure flow velocity from mechanically rotating current meter. A superior feature of the *DVI-K20* is its ability to store up-to five current meters data at a time and interface directly to a Laptop, Pocket-PC, or other computing device and provide data in MS-Excel File Format that can be used externally to compute discharge. Current Meters perform a mechanical switch closure can be used with the *DVI-K20* to produce a clean, noise-free signal. To measure and compute velocity, ***the DVI-K20 provides flexibility to User to Program it for upto 5 Current meters calibration equation with up to 3 rating equations for each current meter.*** USB port is provided for data downloading from terminal to Computer/Laptop. Data file is saved in Microsoft's Excel Format.

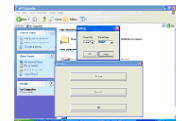


Data Logger Features & Specifications:

Sensor Input:	Any Current Meters of any make with switch closure output (<i>sold separately</i>).
Mode of Operation:	Velocity Logger Mode & Rev. Counter Mode
Parameter Monitored:	<i>in Velocity Logger Mode:</i> Date, Time, Velocity (m/s). <i>in Rev. Counter Mode:</i> Date, Time, Rev. & duration.
Display:	LCD (16 X 2) to display the instrument status.
Keyboard:	provided for on-site programming.
Logging:	Automatic (after measurement)
Site Reference	Programmable
View/Delete Data	User can be view / delete logger data at site without help of computer.
Current Meter Revolution Buzzer	Provided with user selectable ON/OFF Feature
Key Tone	Provided with user selectable ON/OFF Feature
Back Light:	Provided with user selectable High, Medium & Low intensity and ON/Timed ON feature.
LCD Contrast:	Provided with user selectable 0 to 7 contrast Levels.
PC Software:	GUI based Virtualware software for Data download.
Real Time Clock:	Internal with accuracy of +/- 2 minutes /year & leap year compensation
Memory:	8192 data sets.
Battery :	2XAA Alkaline Batteries (easily replaceable onsite).
Battery Monitoring:	Battery Level display on LCD with Low Battery Warning
Operating Humidity	0 to 100%, Operating Temp: - 20 to 70 °C
Data Port:	USB Port for Downloading Data from Data Logger to Computer/Laptop.
Data Output Format	MS- Excel

Virtualware Application Software:

Virtualware is a user-friendly, Menu Driven, Windows based software allows you to view & save collected data from data logger to computer/laptop. Data file is saved in Microsoft's Excel format.



Virtual
Hydromet

1105/1, Salempur Rajputana Industrial Estate
Roorkee - 247667, Haridwar, Uttarakhand, INDIA
Tel :+91-7088-772-772, vhydromet@yahoo.com



Represented by:

**** Drawing / specifications are subjected to change at any time without prior notice as per manufacturing suitability.**